



# CIVIL CORPORATION

---

## Corporate Profile



# ABOUT US



At Civil Corporation, we are passionate about initiatives that help to improve the quality of life for the Construction. We do not merely build, we create the new tomorrow that you have always dreamt of.

Our strength lies in our expertise and our ability to deliver ideas and innovations that help drive growth. We build not just quality structures but relationships to last.

“ We believe that contributing to the society must become a lifelong practice, not just a responsibility that one is obliged to do .”



## Why to choose Civil Corporation?

# COMPANY MOTTO



### Experience

With the legacy of more than 15+ years in this sector makes us strong foundation for upcoming challenges



### Interlocution

Our service philosophy is proactive & not reactive, quick response with positive attitude guaranteed.



### Customer Values

We want our customer to be completely satisfied with our service leaving an optimistic impression about us.



### Expertise

We believe in ingenuity with integrity and hard work along with the trends & requirements of market.

*"To be the best choice of all time with excellency, quality and safety."*



# MAIN SEGMENTS





★ SAFETY ★



# OUR STRENGTHS

- Quality Material •
- Great Service •
- Execution Capacity •
- Latest Tools and Equipments •
- Safety •
- Clientele Reference •
- Cost Compatibility •



# COMPLETED PROJECTS



IDEMITSU LUBE INDIA PVT LTD , PATALGANGA  
(Roofing Solar + Repair and maintenance of PEB shed)



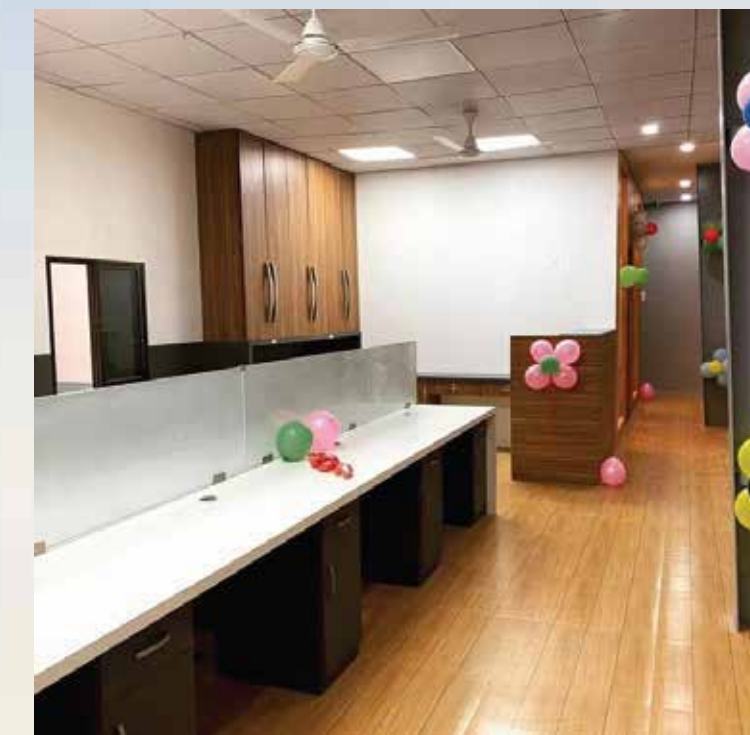
# COMPLETED PROJECTS



MITSUBHISHI CORPORATION, PUNE  
( Civil + PEB Work )



# COMMERCIAL INTERIOR



Kirloskarwadi  
(Civil + Interior Works)

SHREE ENGINEERING, PALUS  
(Civil Work + PEB Shed + Office interior at  
mezzanine slab)





# ONGOING PROJECTS



SANGRAM CANE AGRO, SUGAR FACTORY, BHILAWADI  
(PEB Work)



PALUS ENGINEERING

# RESTORATION



MEGA WINGS FACTORY EXTENSION

# COMPANY CLIENTS



**Municipal Corporation of Pune**  
(No. of Tender Contracts under  
govt. Bodies)

**Bank Of Maharashtra**  
(Lokmangal)

**Idemitsu Lube India Pvt Ltd**  
(Patalgunga MIDC)

**Nyati Group**  
(Malpani School & Symbiosis  
College)

**Shimizu Corporation**  
(Shirwal MIDC)

**Goel Ganga Group**  
(Ganga Legend, Bavdhan)

**Nandan Group**  
(Nandan Prospera Gold,  
Bavdhan)

**MUFG Bank**  
(Bank Of Tokyo Mitsubhishi  
New Mumbai)

**Mizuho Bank**  
(Mumbai)

**Indiana Gratings Pvt Ltd**  
(Jejuri MIDC)

**Datwyler India Pvt Ltd**  
(Shirwal)

**OYC India Pvt Ltd**  
(Shirwal MIDC Satara)

**Sangram Cane Agro**  
(Palus MIDC, Sangli)

**Nipro India Pvt Ltd**  
(Shirwal MIDC Pune)

**No of Projects in MIDCs -**  
Palus, Talegaon, Patalganga,  
Shirwal, Chakan + more



# BUSINESS INFORMATION

- Business Name : Civil Corporation
- Managing Director : Dr. Madhavi Patil (PhD,ME,BE)
- Office Address : C-05, Vijayarashmi Residency,  
Warje, Pune - 411058
- Website : [www.civilcorporation.com](http://www.civilcorporation.com)
- Email ID : [civilcorporation2612@gmail.com](mailto:civilcorporation2612@gmail.com)  
[contracts@civilcorporation.com](mailto:contracts@civilcorporation.com),  
[info@civilcorporation.com](mailto:info@civilcorporation.com)